

43620 PE Ball Valve

For Gas, Water and Industrial PE Pipe Systems.

The PLASSON 43620 valve range is a full bore* PE valve, with a glass reinforced PP ball. Manufactured to BS-EN1555 and BS-EN12201, the valve is suitable for use on both gas and water applications.

With long spigot ends, the valve is suitable for butt fusion, electrofusion or connection using the PLASSON mechanical and pushfit range.

A 2 purge option is also available, along with other accessories.



KEY FEATURES

- Full bore* passage.
- Fully encapsulated ball, PE over molded for a one piece, single material body, no servicing required.
- Unique, fully injection molded one piece design, is free from internal cavities and potential leak paths.
- 1/4 turn operation with stops, open and closed position indicator.
- Flat placements at valve bottom.
- Seals NBR, material approved according to EN549 B1/H3.
- Very low pressure loss.
- Outlets PE100 SDR 11, for use with ElectroFusion or Butt Welding, can also be used with Compression Fittings.
- Long spigot outlets making double shot possible.
- Traceability barcode available.



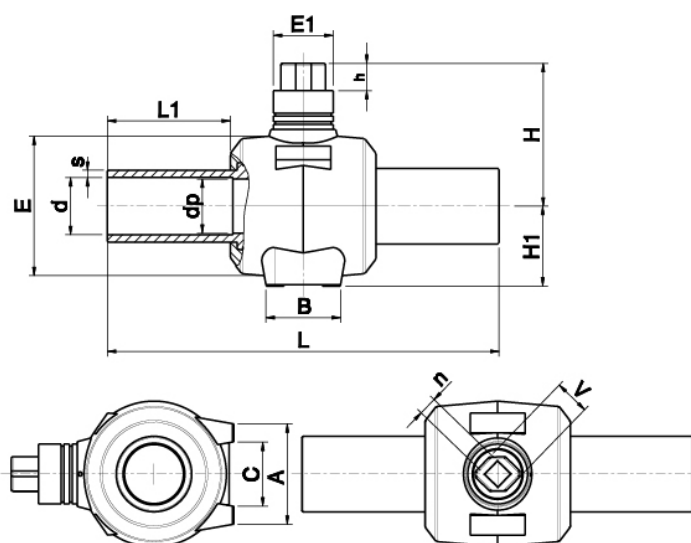
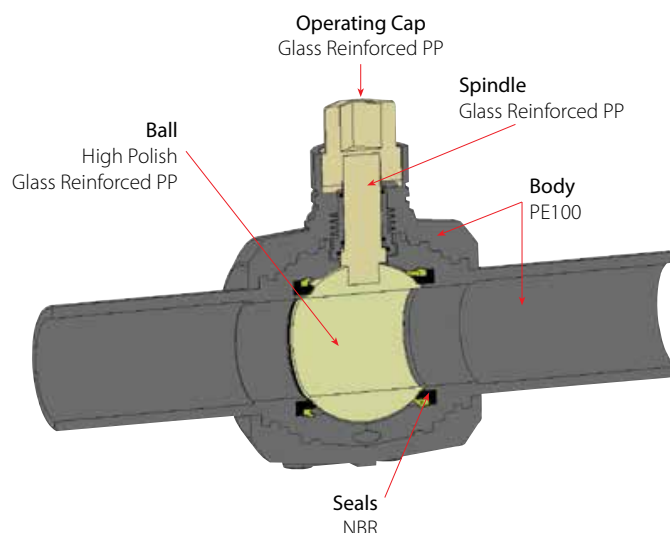
Pressure Rating

PE Ball Valve

- Gas PE100, SDR11
- Water PN16

Standards

PLASSON PE Ball Valves are designed, tested and quality-controlled according to Plasson's internal standards. These standards are based on the following International and European standards: EN 1555, EN 12201, ISO DIS 10933, NFT 54-067



43620 EF Ball Valve PE

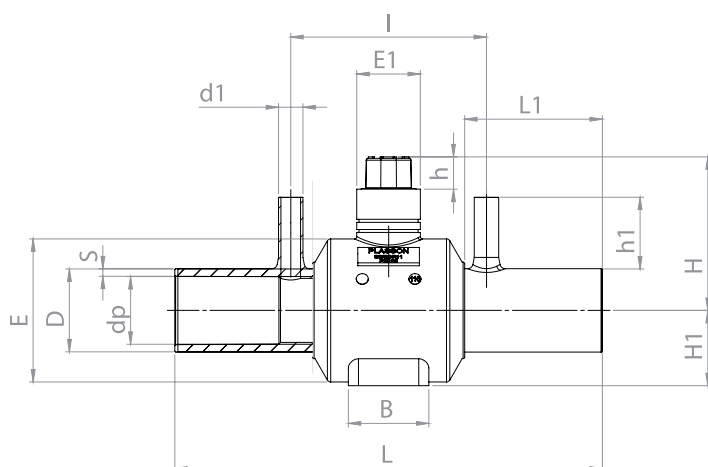
Double Spigot (In accordance with BSEN12201 & BSEN1555)

Code	d	dp	s	D-2xs	L	L1	A	B	C	E	E1	H	H1	h	V	U	w (g)	Units per carton
PV436207025	25	19*	3	19	300	103	60	65	39	80	70	94	50	40	50	26	730	4
PV436207032	32	24*	3.4	25.2	300	103	60	65	39	80	70	94	50	40	50	26	730	4
PV436207040	40	24	4.1	31.8	300	103	60	65	39	80	70	94	50	40	50	26	770	4
PV436207050	50	39*	5.5	39	414	130	85	87	54	120	85	160	80	40	50	26	2100	4
PV436207063	63	48*	6	51	414	130	85	87	54	120	85	160	80	40	50	26	2120	4
PV436207075	75	48	8	59	414	130	85	87	54	120	85	160	80	40	50	26	2200	4
PV436207090	90	70*	8.2	73.6	550	176	146	93	90	200	85	200	110	40	50	26	5600	1
PV436207110	110	86*	10	90	550	178	146	93	90	200	85	200	110	40	50	26	5700	1
PV436207125	125	86	11.7	101.6	550	182	146	93	90	200	85	200	110	40	50	26	5900	1
PV436207160	160	86	16	128	550	182	146	93	90	200	85	200	110	40	50	26	7000	1

*Full Bore Dimensions

PE Ball Valve

With two purge points



4362Q PE Ball Valve

With Two Purges



Code	d	dp Ball	s	L	L1	A	B	C	E	E1	H	H1	h	V	U	I	d1	h1	Type	w (g)
PV4362Q7090	90	70	8.6	550	176	146	107	90	187	85	200	110	40	50	26	251	32	105	Full bore	5606
PV4362Q7110	110	84	10	550	178	146	107	90	188	85	200	110	40	50	26	251	32	95	Full bore	5784

Accessories

4363 Operating Key

For use with EF Ball Valve 43620

